

Project Description/Narrative:

### **FLCC - CENTER FOR ALLIED HEALTH**

Responding to a regional and national shortage of skilled health care professionals, Finger Lakes Community College (FLCC) set out to create a new Center for Allied Health. Seeking to expand and update the existing Nursing Program, a renovation and additions project was conceived to triple the amount of space.

The instructional program elements included: simulation hospital patient bays, control rooms for instruction and testing, debriefing rooms for analysis, simulation medicine rooms, a laundry room, a classroom, and two large flexible skills labs. In addition, a state-of-the-art hololens lab for medicine-based augmented reality instruction, was also developed. Support spaces such as offices, staff workroom, storage areas, and lounges were intermixed with the instructional spaces.

Referencing FLCC's Master Plan, a new entrance and lobby, providing a much-needed accessible path from the south parking lot, was incorporated. Replacing a decades-old 'temporary' trailer, a building addition, with a canopied focal point, terminates a curving sidewalk that leads students, faculty, and guests into the campus.

Once in the lobby, a stairwell, that aligns with the primary north-south circulation spine, allows sunlight down to the lower level. The lobby provides gathering and meeting opportunities, restrooms, and a future connection to later-phase instructional space.

The material palette is contextual, neutral, and accented by biophilic elements. Cast-in-place concrete, prevalent with the original Brutalist-style building, was used for the foundation and main stair. The curtainwall is designed with deep mullions and sunshades to control natural light. Ceiling clouds, constructed of wood slats, hang below linear light fixtures to provide diffused artificial light. The subterranean, lower-level instructional spaces feature large-scale murals. The images were obtained from FLCC's Fine Arts Program through a student competition themed upon Finger Lakes nature.

The overall layout allows for flexibility of instruction and adaptability of curriculums, offering a 'real life' hospital wing experience, while promoting spontaneous breakout meetings, discussions, and interactions.

With this significant capacity increase, FLCC has responded to its growing nursing enrollment, and the Center for Allied Health is poised to prepare future healthcare professionals for the workforce in this critical field.

## **AIA's Framework for Design Excellence**

1. Design for Integration: What is the big idea behind this project and how did sustainability inform the design concept?

*The two primary ways sustainability informed this project are harnessing natural light and the use of biophilic design elements.*

*The curtainwall is designed with deep mullions and sunshades to control natural light. The orientation of the main stairwell allows sunlight to be directed down to the lower level.*

*The material palette is contextual, neutral, and accented by biophilic elements. Ceiling clouds, constructed of wood slats, hang below linear light fixtures to provide diffused artificial light. The subterranean, lower-level instructional spaces feature large-scale murals. The images were obtained from FLCC's Fine Arts Program through a student competition themed upon Finger Lakes nature.*

7. Design for Wellness: How does the design promote the health of the occupants?

*The Center for Allied Health's primary goal is to prepare healthcare professional for the field of nursing. The new atmosphere provides views of nature, exposure to natural light, a natural material palette, and biophilic imagery created by students. These elements are not only healthy for the students and faculty that inhabit the center, they also emphasize the healing powers of nature that are finding their way back into contemporary hospital design. This project has introduced the concept of biophilic design to the nursing students and, through cross pollination, has exposed this philosophy with the student in the fine arts program.*

9. Design for Change: Is the building resilient, and able to easily accommodate other uses in 50-100 years?

*We hope that it is. A couple of things that were not discussed in depth in the project narrative is the construction technology and the strategic phasing that was employed.*

*The new addition replaced a tucked away entry located in a sunken pit with no visibility that suffered from chronic foundation moisture issues. The cast-in-place concrete construction not only emulated its Brutalist context aesthetically, it also serves as a structural waterproof retaining wall. And an extensive drainage system, both at and below grade, was integrated into the design to handle ground water. The eastern section for the addition was designed for two levels, although the budget for this phase would only allow for construction of the lower level. Since the completion of the project, FLCC has obtained funding to build more laboratories and instructional spaces to further serve the nursing program. This futureproofing provided in the previous phase anticipated the future addition, and has facilitated the next phase to happen with minimal impact to operations.*

*Lastly, the instruction spaces and laboratories were designed with inherent flexibility. Deemed as 'skills labs', they anticipate that technology is everchanging in the field of health care. They utilize simulation patient bays where student's training can be recorded for assessment. After the recordings, debriefing rooms allow students and teachers to review the videos, and provide critical feedback. The hololens lab, a state-of-the-art instruction space for medicine-based augmented reality instruction, was also developed in this project. With unlimited possibilities, this type of technology offers a unique platform for students to view holographic images and learn about human anatomy.*

## **AIA Rochester Community Impact Award**

Community Impact Award summary:

*Responding to a regional and national shortage of skilled health care professionals, Finger Lakes Community College (FLCC) set out to create a new Center for Allied Health. Seeking to expand and update the existing Nursing Program, a renovation and additions project was conceived to triple the amount of space.*

*The instructional program elements included: simulation hospital patient bays, control rooms for instruction and testing, debriefing rooms for analysis, simulation medicine rooms, a laundry room, a classroom, and two large flexible skills labs. In addition, a state-of-the-art hololens lab for medicine-based augmented reality instruction, was also developed. Support spaces such as offices, staff workroom, storage areas, and lounges were intermixed with the instructional spaces.*

*The overall layout allows for flexibility of instruction and adaptability of curriculums, offering a 'real life' hospital wing experience, while promoting spontaneous breakout meetings, discussions, and interactions.*

*With this significant capacity increase, FLCC has responded to its growing nursing program enrollment, and the Center for Allied Health is poised to prepare future healthcare professionals for the workforce in this critical field.*





FLCC

SANDS CENTER FOR HEALTH  
FAMILY ALLIED



1. New South Entry Vestibule
2. South Parking Area
3. North Entry Vestibule
4. North Parking Area
5. New Addition (3<sup>rd</sup> & 4<sup>th</sup> Floors)
6. Future Nursing Expansion (4<sup>th</sup> Floor)
7. Removed Temporary Building

←→ Primary Campus  
North-South Circulation

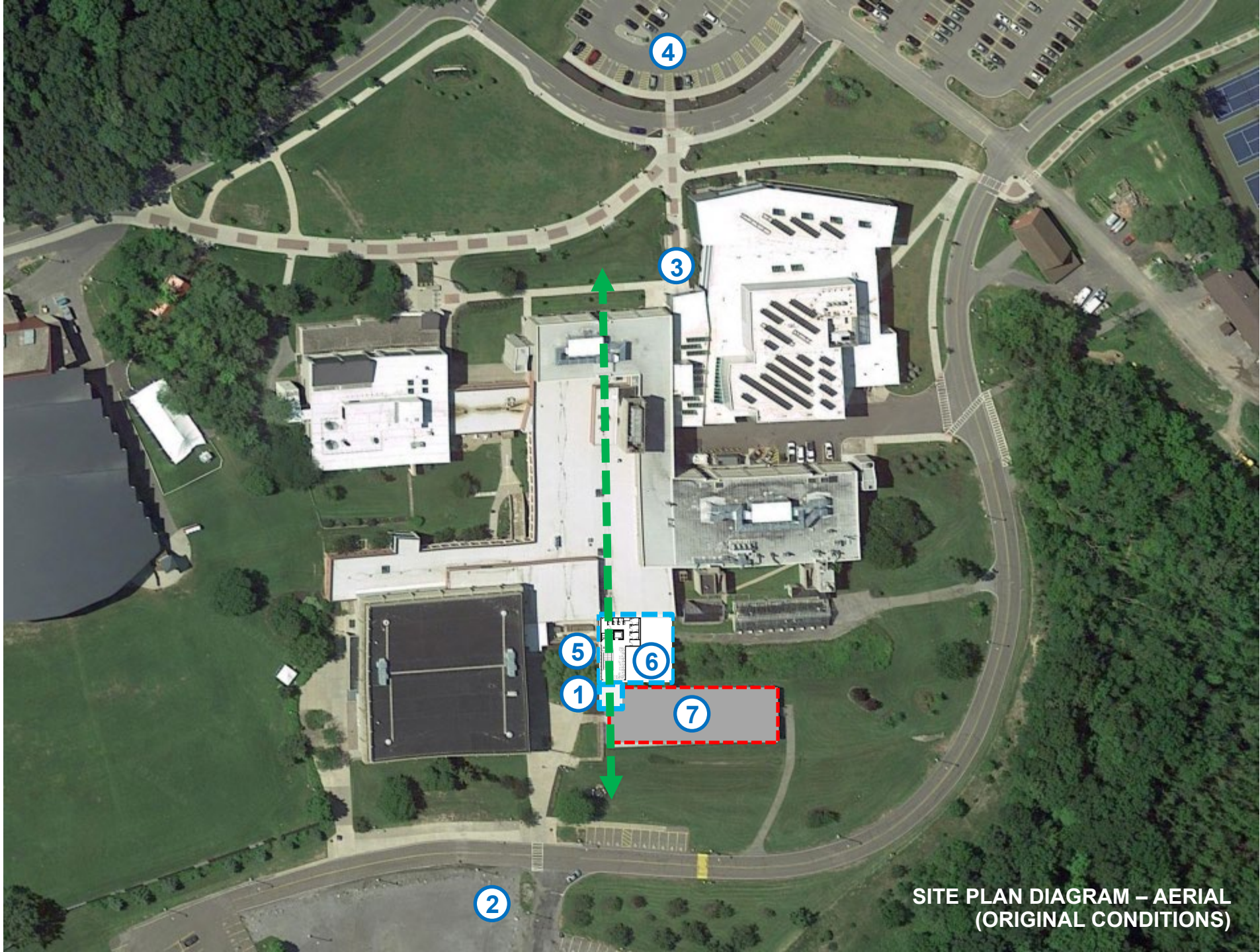


New Addition



Removed Building

*“...the new addition provides a formalized south entry that provides accessibility and aligns with the primary north-south campus circulation spine...”*



SITE PLAN DIAGRAM – AERIAL  
(ORIGINAL CONDITIONS)





*"...the two-story addition provided a new entrance and lobby, much-needed accessibility, and replaced a decades-old 'temporary' trailer building..."*



*"...a canopied focal point terminates a curving sidewalk that leads students, faculty, and guests into the campus..."*

BEFORE

AFTER





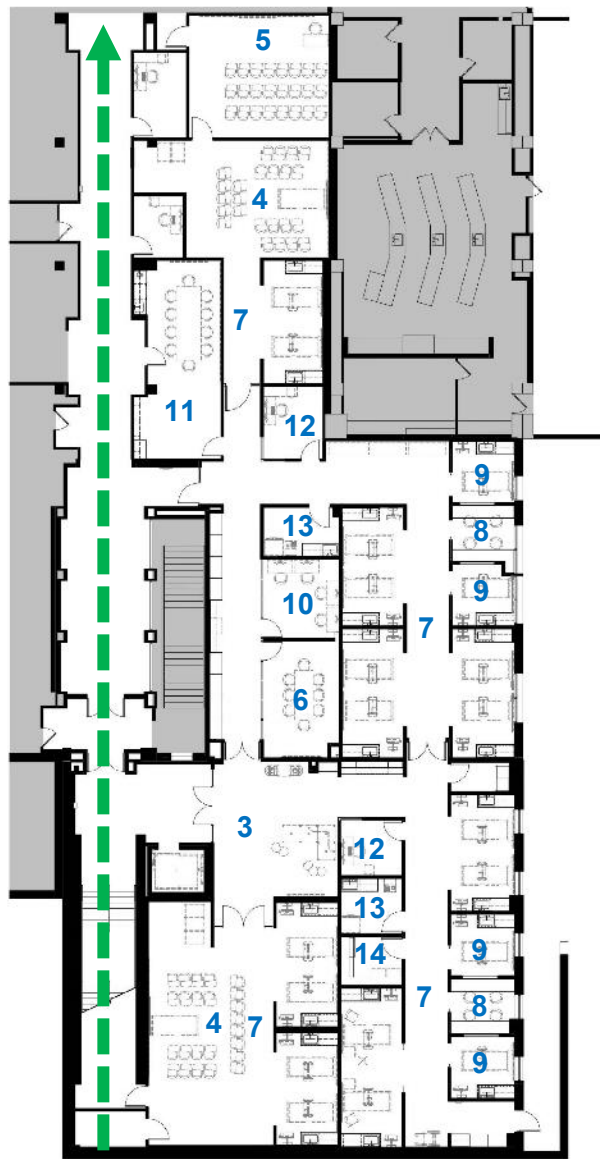
FLCC

FAITH

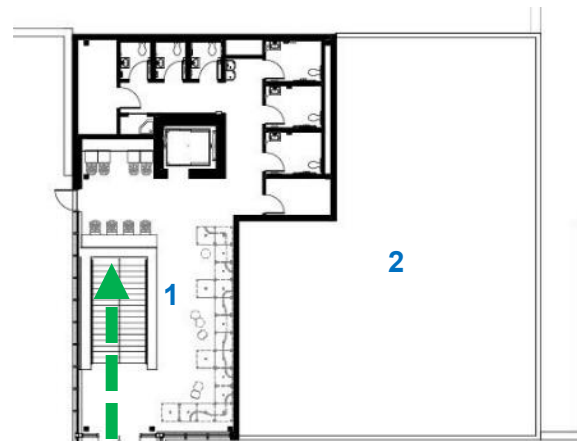


1. Main Lobby
2. Roof (Future Lab Expansion Area)
3. Allied Health Lobby
4. Flexible Skills Lab
5. Instruction Room
6. Debriefing Room
7. Patient Simulation Bays
8. Control Room
9. Simulation Testing Room
10. Exam Room
11. Staff Room
12. Office
13. Medication Simulation Room
14. Laundry

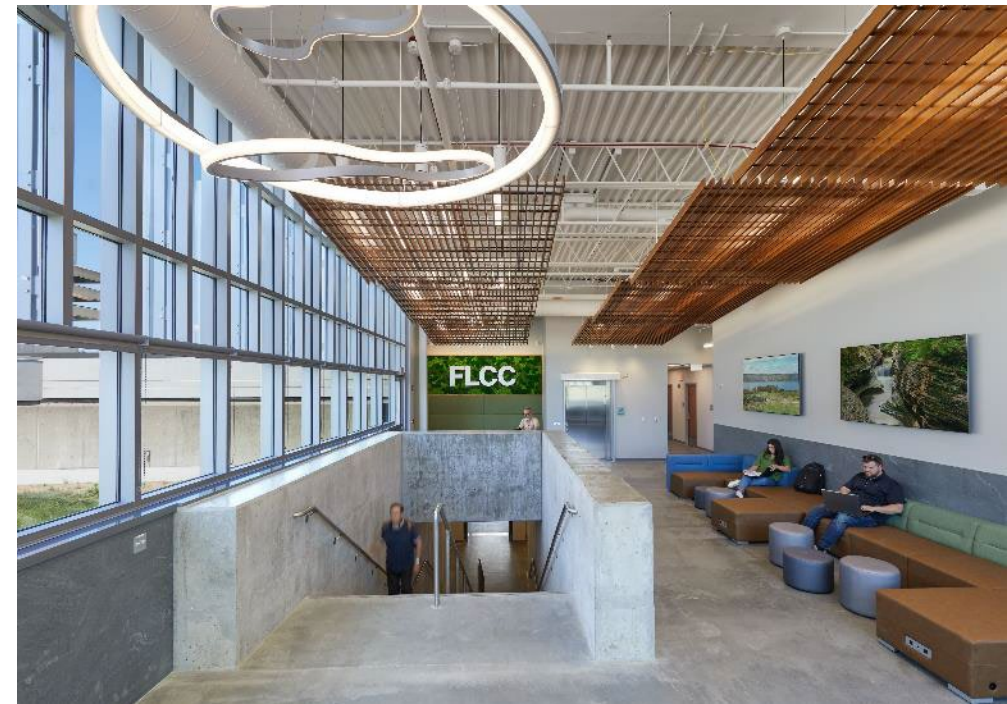
← → Primary Campus North-South Circulation



**LOWER-LEVEL  
3<sup>rd</sup> FLOOR PLAN**



**GRADE-LEVEL  
4<sup>th</sup> FLOOR PLAN**







*"...once in the lobby,  
a stairwell, that aligns with  
the primary north-south  
circulation spine..."*

*"...the material palette is  
contextual, neutral, and  
accented by biophilic  
elements..."*



*“...clouded wood slats hang below linear light fixtures to provide diffused artificial light...”*

*“cast-in-place concrete, prevalent with the original Brutalist-style building, was used for the foundation and main stair.”*







*"...the lobby provides impromptu gathering and meeting opportunities..."*

*"...the curtainwall is designed with deep mullions and sunshades to control natural light..."*



*"...the orientation of the stairwell allows sunlight down to the lower level..."*











*"...the subterranean, lower-level instructional spaces feature large-scale biophilic murals..."*

*"..the images were obtained from FLCC's Fine Arts Program through a student competition themed upon Finger Lakes nature..."*



*"...the instructional program includes simulation hospital patient bays and large flexible skills labs..."*

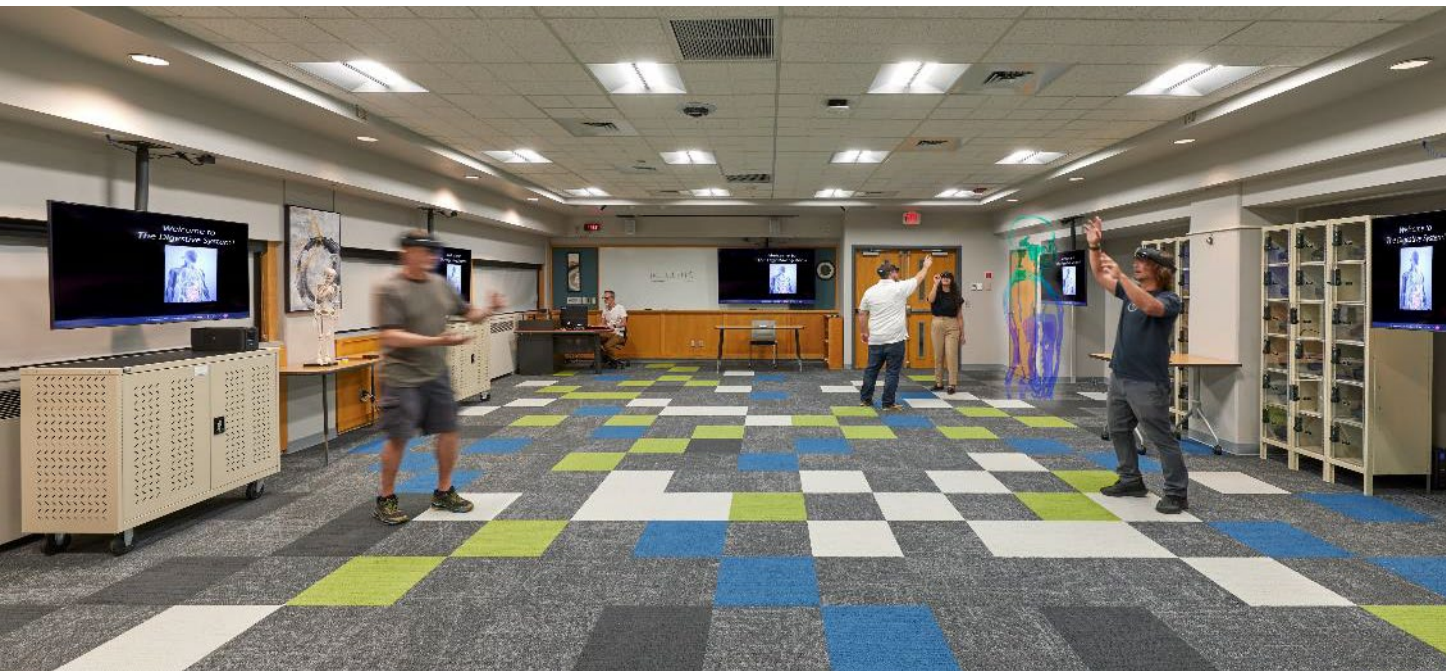






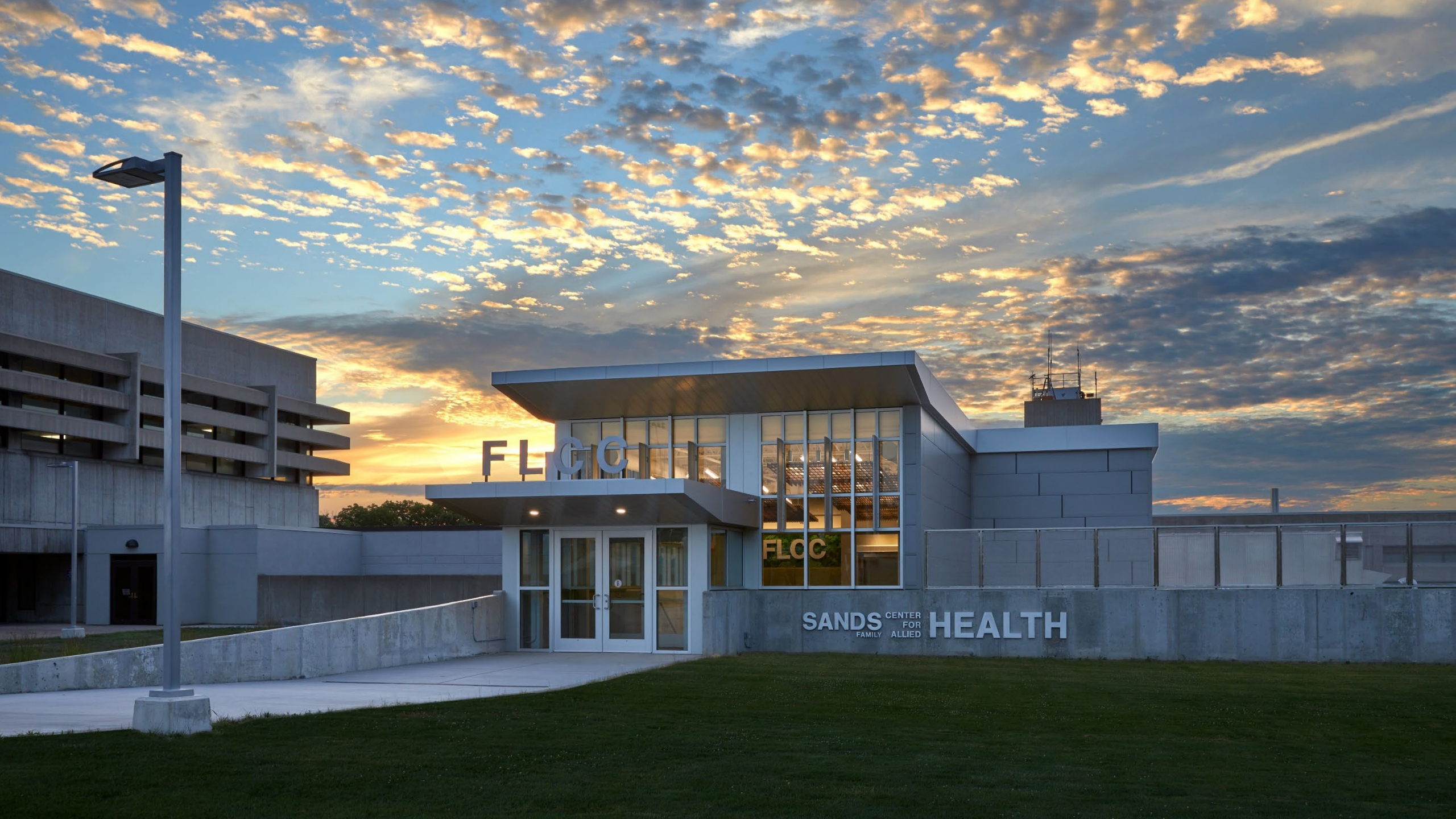
*“...the layout allows for flexibility of instruction and adaptability of curriculums, offering a ‘real life’ hospital wing experience, while promoting spontaneous breakout meetings, discussions, and interactions...”*





*"...with this significant capacity increase, FLCC has responded to its growing nursing enrollment... the Center for Allied Health is now poised to prepare future professionals in this critical field..."*





FLOCC

FLOC

SANDS CENTER FOR HEALTH  
FAMILY ALLIED