

Team



Sayl Queen Bee

Inspiration: Our piece draws from the rich history and innovative spirit of our esteemed sponsors, MillerKnoll and Maharam. This collaboration brings the iconic elegance and sustainable ethos of midcentury modern design to the forefront of fashion, celebrating MillerKnoll's visionary approach to environmental stewardship.

The Queen Bee Concept: In 1995, MillerKnoll embarked on a remarkable journey towards sustainability with the establishment of the GreenHouse, an eco-friendly facility in Holland, Michigan. Faced with an invasion of paper wasps, MillerKnoll chose an extraordinary solution: they introduced 600,000 honeybees housed in 12 beehives. These industrious bees not only drove the wasps away but also transformed the surrounding landscape with vibrant wildflowers and abundant honey.

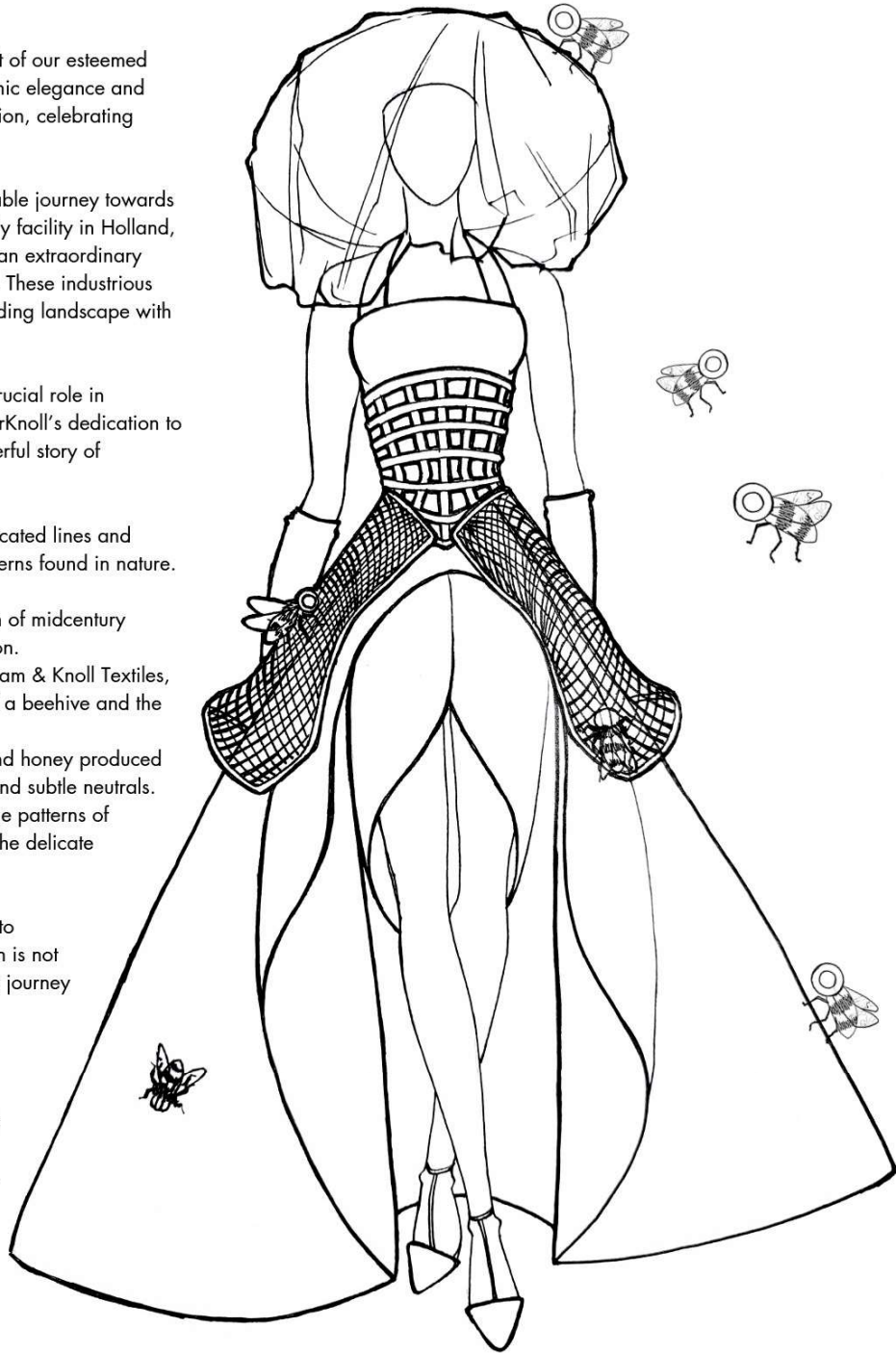
Today, the GreenHouse is home to 24-38 beehives, each playing a crucial role in sustaining local ecosystems and producing honey that embodies MillerKnoll's dedication to the environment. This honey, although modest in quantity, tells a powerful story of coexistence and environmental responsibility.

Fashion Meets Furniture: Our "Queen Bee" concept melds the sophisticated lines and textures of midcentury modern furniture with the intricate, organic patterns found in nature. The collection features:

- **Silhouettes:** Bold, architectural shapes inspired by the sleek design of midcentury modern furniture, reflecting the harmony between form and function.
- **Textures and Fabrics:** Luxurious, sustainable materials from Maharam & Knoll Textiles, incorporating innovative weaves that evoke the intricate beauty of a beehive and the fluidity of honey.
- **Color Palette:** A rich, earthy palette drawn from the wildflowers and honey produced at the GreenHouse, featuring deep golds, vibrant pops of color, and subtle neutrals.
- **Embellishments:** Delicate embroidery and appliqués inspired by the patterns of honeycomb and the elegance of midcentury design, symbolizing the delicate balance between nature and innovation.

Each piece in the collection tells the story of MillerKnoll's commitment to sustainability and environmental harmony. The "Queen Bee" collection is not just a tribute to their innovative past but a celebration of their ongoing journey towards a sustainable future.

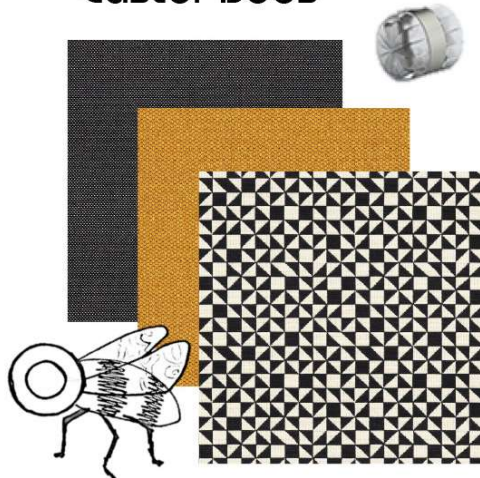
"Dangerous Liaisons" is a daring and evocative exploration of the intersection between fashion and furniture, celebrating the legacy of MillerKnoll and Maharam. It is a testament to the beauty that emerges when nature and design coexist in perfect harmony, exemplified by the transformation of the GreenHouse and its flourishing bee colonies. This collection invites you to experience the elegance, complexity, and sustainability that define the spirit of MillerKnoll.



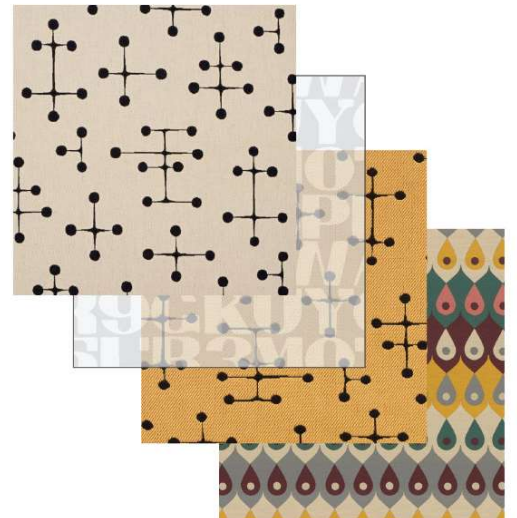
Herman Miller Sayl Chair



Knoll Life Chair Caster Bees



Conceptual Design



Product Sponsors
MillerKnoll

maharam