

# 2022 Design Awards

---



# 2022 Design Awards Winners



**Design Award**  
260 East Broad Street  
Bergmann



**Design Award**  
OPENhouse  
In.Site: Architecture



**Citation Award**  
Home Leasing Union Square Apartments  
SWBR



**Community Impact Award**  
The Little Theatre  
Bero Architecture



**Merit Award**  
Cuba Rushford  
CPL



**Merit Award**  
Melo Coffee & Kitchen  
Rozzi Architects



**Community Impact Award**  
Irondequoit Community Center  
SWBR



**Designers Unleashed Award**  
TREEHOUSE  
Christina Fluman and Julia Renick of Edge Architecture



**Citation Award**  
The Little Theatre  
Bero Architecture



**Citation Award**  
Girne City Hall  
In.Site: Architecture



# Thank you to all of our participating firms!



**6 Perrin Street Apartment**  
Architectura PC



**260 East Broad Street**  
Bergmann



**The Little Theatre**  
Bero Architecture



**Revival House**  
Blake H. Held Architect, PLLC



**625 South Goodman**  
CJS Architects



**Harold's Square**  
CJS Architects



**RRH: Sands Constellation Center**  
CPL



**Cuba Rushford**  
CPL



**University of Rochester:  
Gleason Library Refresh**  
CPL



**RCSD: Clara Barton School No. 2**  
CPL



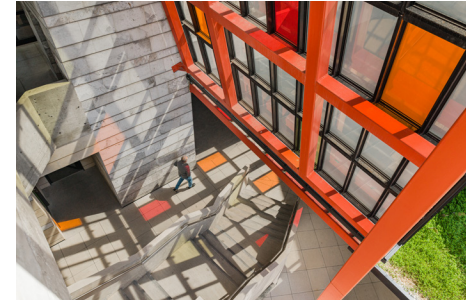
**Brewery Ardenes**  
Edge Architecture



**First American Equipment Finance**  
Hanlon Architects



**GVCSD: Capital Project Phase II  
Innovation Center**  
HUNT-EAS



**Girne City Hall**  
In.Site: Architecture



**The Commissary Downtown Kitchen  
Incubator**  
HUNT-EAS



**OPENhouse**  
In.Site: Architecture



**John S. Dyson New York  
Energy Zone**  
LaBella Associates



**APEX Student Housing**  
Passero Associates



**Chili Community Center**  
Passero Associates



**24 Jones - Substance Abuse  
Rehabilitation Housing**  
PLAN Architectural Studio, PC



**Sampson Veterans Memorial Cemetery  
Administration Building and Sanctuary**  
PLAN Architectural Studio, PC



**West End Heights - Affordable and  
Special Needs Housing**  
PLAN Architectural Studio, PC



**Melo Coffee & Kitchen**  
Rozzi Architects



**Irondequoit Community Center**  
SWBR



**The Lake House on Canandaigua**  
SWBR



**Home Leasing Union Square  
Apartments**  
SWBR



**Office Renovation -  
Vargas Associates Rochester Office**  
Vargas Associates

# Design Award



## 260 East Broad Street Bergmann

**Owner**  
Buckingham Properties

**Contractor**  
LeFrois Builders & Developers

**M/E/P Engineer**  
Postler & Jaeckle

**Photography**  
Tim Wilkes Photography

**Bergmann Project Team**  
Andrew Raus – Principal in Charge  
Gary Flisnik – Project Manager  
Steven Kushner, Senior Project Manager (Architect of Record)  
Jason Boris – Project Manager (Design Architect)  
Sean O’Rourke – Design Principal  
Kara Brown – Project Interior Designer  
Alex McNamara – Project Surveyor  
Christopher Wood – Survey  
Eric Shaw – Landscape Architect  
Justin Lattierre – Civil Engineer of Record  
Scott Michaud – Mechanical Engineer  
Daniel Rusnack – Electrical Engineer  
Tami Coghlan, Electrical Designer

### Project Description

The designers were challenged to create solutions for a mixed-use project that would house the workspace for an anchor tenant in a manner that equally promoted their brand and commitment to Rochester. This new architectural intervention in downtown was to provide for retail, dining, and multiple residential units – creating a new and creative entry in support of Rochester’s demand for urban living.

We recognized the importance of the site both in its scale along the vehicular entrance into the city, but also as an integral component to the city’s fabric. In response to this, the design team created several schematic elements that meet the users of this building and adjacent site with varying experiences. Maintaining a cohesive response to the design while attempting to breakdown the scale of these elements as they responded to its unique and high-profile site was a consistent source of accountability against which all design decisions were measured. In the creation of a secondary parti, our designers created multiple opportunities to integrate outdoor spaces that extended normally interior activities outside and further integrated with the city’s public exterior amenities and parks.

Our response for this site is a new five-story mixed-use development on the corner of Clinton Avenue and Broad Street in downtown Rochester. The building is approximately 107,000 SF featured prominently on the primary corridor into, and around, Rochester. Located over an existing three-story below-grade parking garage, the program includes ground-level retail spaces with a public lobby, workspace on the second and third levels for a primary commercial anchor tenant, and 28 residential units located on the fourth and fifth levels. The application of our secondary parti is made evident in the features of a roof patio for the anchor tenant, a separate communal roof deck for the residents, and multiple private balconies.



### Jury Comments

The project presents a strong reinforcement of the city’s urban fabric and demonstrates great care in the response to the surrounding conditions. The jury appreciated the project team’s good sense of breaking down the scale of a large building to fit the urban context. The project came together nicely with the occupiable pedestrian edge solution to the raised floor condition while resolving the existing conditions of building atop an existing parking garage. The simple massing moves and material selections made for impactful and lasting design.

# Design Award



## OPENhouse In.Site: Architecture

**Owner**  
Noelle Van Deursen & Tim Lynch

**Contractor**  
Danrich Homes Taitem Engineers

**Site/Civil Engineer**  
Pinewood Engineering

**Structural Steel Fabrication**  
Kozel Steel

**Structural Engineering**  
Taitem Engineers

**Photography**  
Tim Wilkes Photography

**In.Site: Architecture Project Team**  
Rick Hauser – Principal + lead design  
Ali Yapicioglu – Partner + Project support  
Kimberly Kraft – Project Architect  
Kurt Schnarr – Project Designer  
Nicole Martin – Project Architect  
Larissa Reynolds – Intern Architect II  
James Reynolds – Downtowns Designer

### Project Description

Seven outdoor structured spaces, on three levels, facing four directions, yields one. very. open. house.

FOUR considerations that led to the pivot in the house’s orientation:  
BUBBA. A request on behalf of the couple’s large German Shepherd, Bubba, for an enclosed outdoor space. The “pivot” maximizes the width of this outdoor room.  
NEIGHBORS. We wanted to preserve their views across the property to the lake, as well as borrow their front lawns to create dynamic lake vistas.  
ARRIVAL. The pivot avoids the trap of garage doors defining the home’s character from the road.  
SUNSHINE. Finger Lakes homes grapple with low-angled, hard-to-control sun just where the windows want to be. OPENhouse’s property faces west and so would its facade if not for the pivot southward towards more controllable year-round sun.

SEVEN structured outdoor spaces on three levels:  
TAHOE ROOM. Lake-level, sheltered outdoor room for lakeside entertaining.  
COURTYARD. Zen garden-inspired, graveled, enclosed forecourt cleanses the mind. Also, Bubba’s romping ground.  
DECK. Living space outdoor annex wraps the corner. Disappearing glass doors and flush threshold permit unobstructed link to lake life.  
GRILL. Outdoor kitchen next to the indoor kitchen.  
MASTER BALCONY. View for two.  
GUEST TERRACE. View for two, part 2.  
ROOF TERRACE. Private sunbathing in a dense lakefront neighborhood.

ONE large room is the essence of the spatial experience of OPENhouse.  
Living, dining, kitchen, entry, mezzanine, stairs and office all interlock in a two-story spatial dance that seasonally extends outside.  
This openness, volume and orientation serves to channel cooling breezes in, up and out, foregoing the need for air conditioning.  
The required opening-up also ensures one is present at the lake – its sights, sounds and smells – rather than hermetically sealed off for climate control.

Open floor plan, open to southern sun and lake breezes, open to the outdoor rooms, and open to visitors and entertaining.



### Jury Comments

The jury appreciated the high level of detail given to the site conditions, including minimizing any negative impacts on neighboring properties’ lakeside experience. The overall building form plays homage to Adirondack lake homes but with modern detailing. The interiors are subdued to allow for the beautifully framed views out to the lake to take precedence.

# Merit Award



## Cuba Rushford CPL

**Owner**  
Cuba-Rushford Central School District

**Contractor**  
Kirst Construction Inc. (General Construction Contract)

**Photography**  
Dylan Buyskes, Onion Studio, Inc.

**CPL Project Team**  
Jason Benfante - Principal  
Ryne Wight - Project Manager  
Carly Owczarczak - Interior Designer  
Marissa Colucci -Interior Designer  
Janet Lasher - Interior Designer  
Jacob Mountain - Project Architect

### Project Description

As part of the District’s 2018 Capital Project, the design team provided architectural and engineering design services for two STEAM lab classroom spaces – one for the District’s Middle School and one for the District’s High School. Identical in design, these classrooms were developed to reallocate space within an existing building to ultimately bring back special education services.

Technology infrastructure, flexible layout and program adaptability were the primary drivers in this design.

Power and data provisions for these new classrooms were bolstered to provide students with connectivity and charging needs for both wired and hand-held devices. Teaching spaces were arranged such that learning could occur in multiple formats and facilitate many concurrent activities.

The metaphorical “hive” of activity was a driving theme that further reinforced the utilization of hexagonal acoustical control panels, brightly colored accents and playful light fixtures. Materials were selected based on durability (for spirited learning and discovery) and comfort to invite exploration of every corner. These beautiful classrooms provide a laboratory type environment where students can conduct experiments and simulations.



### Jury Comments

The jury appreciated the forward-thinking educational design proposal. Of particular note is the inventive solution to navigating the floor elevation difference by having the ramp create the backdrop to an alternative teaching space. The modern exteriors of the additions blend with the existing building nicely.

# Merit Award



## Melo Coffee & Kitchen Rozzi Architects

**Owner**  
Tony Colon

**Contractor**  
Keystone Construction & Renovation

**Photography**  
Tony Colon

**Rozzi Project Team**  
Nathan Rozzi – Architect  
Cassidy Roelofs – Designer

### Project Description

This Australian cafe located at the point of a flatiron building in the Neighborhood of the Arts (NOTA) is focused on fresh local food/drink and a social environment that welcomes everyone. The challenge of this space was the triangular geometry, a bisecting masonry bearing wall, limited floor space and 3 entrance points. Designed to activate its two large street fronts, expansive windows let in ample natural light and anticipate that viewers will be both inside and out; even the chef has a view through the window behind the cooktop. Backless, suspended shelving displays tableware and locally roasted, direct-from-farm coffee. An array of seating options let diners choose between banquettes, an upholstered window seat, a bar top, inside high or low tables or alfresco. The service core is open to connect patrons and staff and the colors are vibrant. Gallery walls are built in to feature rotating artwork and highlight the existing and salvaged building materials. Whether you are there for a cup of coffee, to view the art during First Friday, to open your laptop and stay all day or to meet a friend for a meal and a craft beer, the cafe is lively at all hours. The design is tailored to support the personality of place and warm hospitality of its founder.



### Jury Comments

The jury was drawn to the project with its great use of color and materials to make a small space feel inviting. It creatively worked with a challenging footprint where space was maximized for both operations and variety of user experiences.

# Citation Award



## The Little Theatre Bero Architecture

**Owner**  
The Little Theatre Film Society

**Contractor**  
UDN Inc

**Structural Engineering**  
Jensen/BRV Engineering PLLC

**MEP Engineering**  
CW Engineering

**Performance AV**  
Applied Audio & Theatre Supply

**Cinema AV**  
Microindie Cinema

**Photography**  
Lindsay Yoder

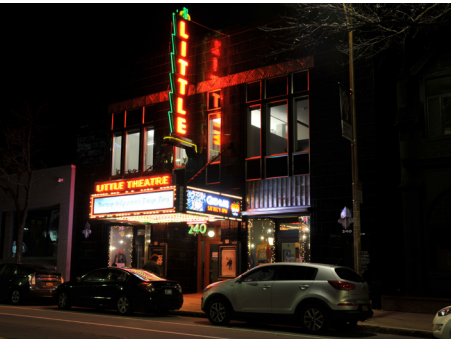
**Bero Architecture Project Team**  
John Page – Senior Architect  
Christopher Brandt – Project Architect  
Katie Eggers-Comeau – Architectural Historian  
Kati Smith – Interior Designer

### Project Description

This multi-phase project began with a thorough assessment of the existing conditions and in-depth research into the history and significance of the 1929 Art Deco style cinema. The resulting body of knowledge from this study was utilized as a guide for the restoration and reconstruction of specific architectural elements throughout, as well as design inspiration for the comprehensive rehabilitation of the building. The client’s key project goals included:

- Improving front-of-house operations to include expanded concessions, ticketing, and commercial kitchen production.
- Making the building fully accessible for patrons, staff, and performers.
- Reimagining the auditorium as a fully outfitted multi-use performance space while continuing to function as a state-of-the art cinema.
- Connecting the historic cinema building to the existing non-historic rear theatre property, and providing a formal rear entrance to the building.
- Replacing the ad hoc mechanical systems throughout the building with centralized and holistic HVAC, plumbing, electrical, and AV systems.
- Enhancing the Art Deco style of the building and restoring lost elements of its design to create a more immersive patron experience.

The cinema is land-locked with the exception of a small rear parking lot shared by it and the rear theatres. The only room for expansion was a narrow open-air alleyway and inset corner at the rear of the building, and so, the project goals had to be largely accomplished within the existing compact building envelope. The resulting design process took a surgical approach to thoughtfully incorporating all of the improved mechanical systems and programmatic amenities without compromising the function or historic integrity of a building that has served as a cultural icon for generations of residents in its city. The completed project represents a generational investment in and expansion of the client’s decades long mission of celebrating and supporting the work of independent film and musical artists.



### Jury Comments

It is wonderful to see new life brought to an often-overlooked community asset. The jury appreciated how much was accomplished through minimal moves and simple aesthetic choices.

# Citation Award



## Girne City Hall In.Site: Architecture

**Owner**  
Girne Municipality

**Contractor**  
Korman Construction

**Electrial Engineer**  
Osman Eminel Electrical Engineer

**Mechanical Engineer**  
Yunus Terlik Mechanical Engineer

**Photography**  
Kerim Belet Photography

**In.Site: Architecture Project Team**  
Ali Yapicioglu – Project Lead + Architect  
Ali Teknikel – Architect  
Anil Cagdan – Architect

### Project Description

COURTYARD CONVERGENCE.  
At the crossroads of a Cypriot port city, a new civic center prioritizes urban placemaking and outdoor social spaces.

The site is bounded by city streets on three sides, and represents a consolidation of three distinct civic functions: Municipal Offices, City Hall and Performing Arts

At this new City Center, we seek, adapt and re-interpret an indispensable and now endangered part of the island’s intangible cultural heritage – the Courtyard.

The Courtyard is a response to the island’s climatic conditions, and to the site’s solar orientation and traffic patterns. It conveys cooling mountain breezes and creates sheltered outdoor spaces.

At each of the four levels, workers and guests pass through the Courtyard, its exterior landings and shaded stairwell to visit, conduct business, and take breaks.

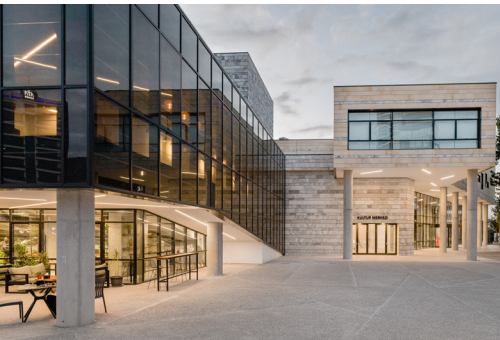
It connects those three civic functions, literally linking ground-level entrances via covered, planted-roofed walkways that protect pedestrians from sun and rain. But more than that, it becomes a forum facilitating chance encounters and discourse.

The glass-canopied stair ascends from there, protected from the elements by its PV-embedded glass. When the sun shines, occasional panes of red, yellow and orange project a dynamic art composition below.

North of the Courtyard and bisected by the stair slot runs the long Municipal Office Building. Its rooms enjoy views north to the Mediterranean and south across the Five-Finger Mountains.

South of the Courtyard and facing the most public intersection is the Performing Arts Center. The theatre within will be completed soon but its cafe – tucked under theater seating – spills out onto a performance plaza.

East of the Courtyard is City Hall. Essentially a three-story atrium, its glass curtain-walled eastern front welcomes the public through a shady portico.



### Jury Comments

The project presents itself with the grandeur expected of a civic building while modern and whimsical at times as well. There are many beautiful moments created at the human scale within the cast-in-place concrete staircase or among the preserved mature trees for example. The project demonstrated a strong response to the unique climate conditions and site forces.

# Citation Award



## Home Leasing Union Square Apartments SWBR

**Owner**  
Home Leasing

**Contractor**  
Home Leasing Construction

**MEP Engineer**  
M/E Engineering, P.C.

**Structural Engineer**  
Torchia Structural Engineering

**Civil Engineer**  
Passero Associates, P.C.

**Photography**  
David Lamb and Gene Avallone (as indicated)

**SWBR Project Team**  
Thomas Gears – Principal/President  
Robert Fornataro – Design Director  
Erik Reynolds – Project Architect  
Brian Dionne – Project Architect

### Project Description

This four-story affordable and supportive housing development is part of the city’s project to remove its aging expressway — a barrier separating downtown from surrounding neighborhoods — to create “complete streets” with walking and bicycle paths. The goal of the expressway removal project was to reconnect neighborhoods and enhance the user (residents, commuters, visitors, business owners) experience, making downtown appealing as a place to live, work, and play.

The project includes ground-level retail and commercial spaces. Levels two through four include 68 one- and two-bedroom residential units. Four ground-level walk-up units are accessed from the street – creating an active street experience which increases safety and social interactions.

Twenty-one apartments are set aside as supportive units for the LGBTQ community and people facing homelessness. A ground level community health center offers much needed support for the neighborhood and community.

In partnership with other community-based programs, housing coordinators will assess each participant’s needs and develop an individualized service plan to maintain housing stability and overall well-being. Participants will also have access to group and individualized education sessions, peer support, training in independent living skills and other wrap around services to support their needs.

A city easement in the center of the site allowed us to create a covered outdoor urban space with the community room opening to this area, making this a highly active space. In addition to the new streetscape and dedicated bike lane, the design includes a covered bike storage area to encourage alternative transportation.

This project was designed to offer affordable and inclusive housing options and provide support services to help residents thrive.



### Jury Comments

The project demonstrated a fresh approach to affordable housing, demonstrating a strong case that good design is for all. The attention to site placement and follow through into the considerations for the composition and material palette was well done. The interiors and exteriors were cohesive in their modern design and sensibilities.

# Community Impact Award



**The Little Theatre**  
Bero Architecture

**Owner**  
The Little Theatre Film Society

**Project Impact Summary**

The Little Theatre, built in 1929, was once part of a national network of over forty “Little Cinemas” dedicated to showcasing the work of independent and foreign filmmakers. It has served as a progressive and inclusive cultural hub in the greater Rochester region for over ninety years. Of the original Little Cinemas from the late 1920s, Rochester’s The Little Theatre is the sole survivor, making it America’s oldest art-house cinema. This nationally unique and enduring cultural legacy is due in large part to the dedication and local leadership of longtime manager Florence Belinson from 1931-1966, co-owners Bill Coppard, Pam and John Blanpied from 1982-2011, and WXXI today, who all perpetuated the institution’s focus on alternative cinema while expanding it to celebrate films, music, and visual art made by, for, and about people of color, women, LGBTQ, and other under-represented communities.

The rehabilitation of the The Little Theatre seeks to restore and transform the historic downtown cinema beyond functional space to a communal place of shared memory, immersive aesthetic experience, and future possibility supporting the continued success and expanded vision of a uniquely Rochester institution.

# Community Impact Award



**Irondequoit Community Center**  
SWBR

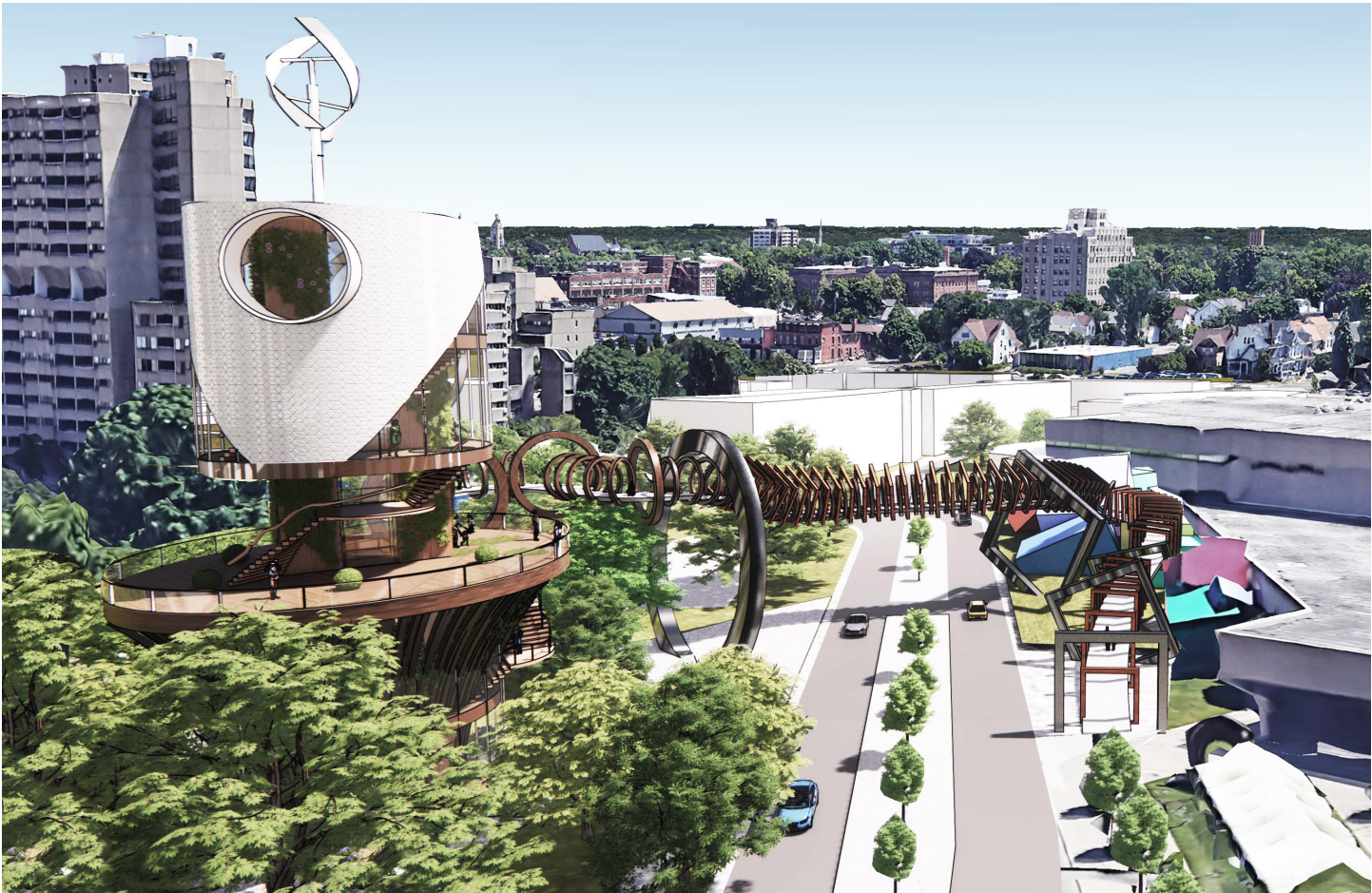
<b>Owner</b> Town of Irondequoit	<b>Contractor</b> Javen Construction	<b>Construction Manager</b> Christa Construction	<b>MEP Engineer</b> M/E Engineering
<b>Civil Engineer</b> Costich Engineering	<b>Food Service</b> Food Service Design Studios	<b>Cost Estimating</b> Trophy Point Construction	<b>Photography</b> Gene Avallone

**Project Impact Summary**  
The former Irondequoit Mall had long been a focus for the officials and residents. Abandoned by retailers, the large empty mall had become an eyesore to residents and a sign of economic decline. Due to its size, finding a new use for the large property was a challenge. Instead of finding a tenant for the entire space, the Town is finding different tenants for parts of the vast building. The new 42,000 SF Irondequoit Community Center is an active, vibrant, safe, and inviting atmosphere for community engagement, education, wellness, and recreation that enriches the lives of Irondequoit residents of all ages and unifies the community. Now the home of Irondequoit Recreation, the new community center includes a basketball court, a walking track, fitness room, a dance/group exercise room, meeting space, a game room, space for pre-K programs, and more.

The aesthetic blends recreation and hospitality to bridge the types of programs offered through the town. The building’s high ceilings and light-colored walls provide a bright, open, inviting environment. Natural wood and stone elements provide warmth and comfort and serve to create more intimate zones. Expansive views of the interior are achieved through an open floor plan, use of glass partitions, and transparent and translucent openings. The completed project provides an overdue resource for the community and serves as an anchor in the redevelopment of the long empty mall space.

**Jury Comments**  
It is refreshing to see new life brought to an underutilized, cavernous, suburban mall building. The spaces were well organized around the existing skylight to maximize natural light and create an energetic community space. The project is a wonderful example of an adaptive reuse that provides a great community resource.

# Designers Unleashed Award



## TREEHOUSE

Christina Fluman and Julia Renick of Edge Architecture

### Project Scope

The 2022 Rochester Designers Unleashed: Architectural Ideas Competition challenges participants to take an actual site available for development in the city of Rochester and unleash their ideas upon it, without mercy or recourse, showcasing its full architectural and design potential.

This year we focus on optimism for the future vision. As Rochester continues to realize its potential, in incremental fashion, most people not paying attention may end up missing the hard-fought progress. The goal for this competition is to use architecture to promote the visibility of the growth being achieved across the city, as well as inspire what comes next.

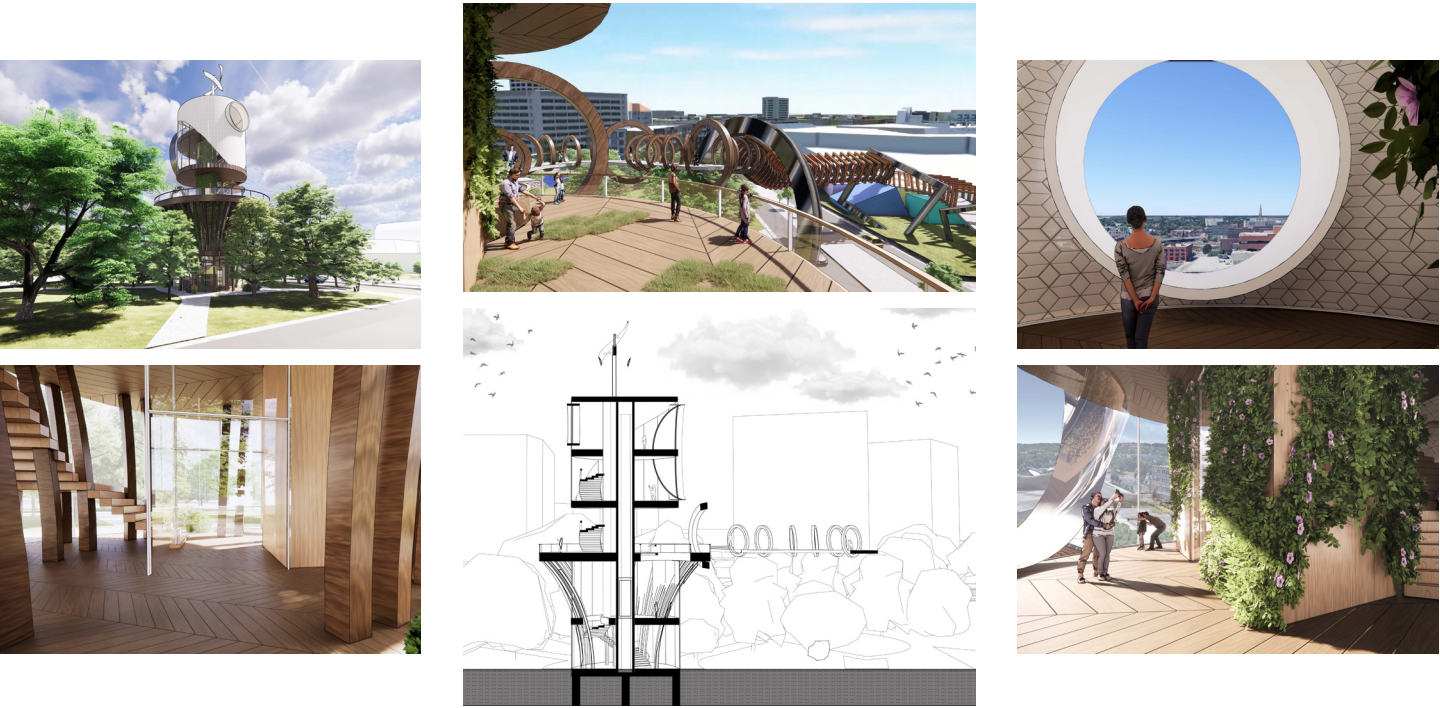
The competition is to design a small structure or pavilion, either free standing or integrated into existing architecture, that provides a vantage point to survey Rochester. The structure should open people’s eyes, to inspire new thinking and ideas in the spirit of future progress. Submissions should consider the location of the structure as well as the perspectives being framed. Projects should be fully accessible to all users and be designed adhering to principles of sustainability.

### Project Description

A treehouse is a platform or building constructed around, next to or among the trunk or branches of one or more mature trees while above ground level. Treehouses can be used for recreation, work space, habitation, a hangout space and observation. In this context, the treehouse serves as a symbol of imagination in the expanding Neighborhood of Play that aims to highlight the creative development that has been happening around the City of Rochester. The structure elevates its users above street level and provides multi-level, 360-degree vantage points that change as the user moves through the treehouse, zooming into different parts of Rochester.

An underlying theme in many of the recent development projects around the City of Rochester has been to try to bridge together adjacent neighborhoods, cultures, and social surroundings. In an effort to promote inclusivity and accessibility, a pedestrian bridge connects the street level to the upper levels of the treehouse, while also providing a safe means of travel for pedestrians to cross what will be a busy street into the new Neighborhood of Play. Transparency through the project plays out through form, structure, and materiality. Natural materials were used in response to the pavilion’s adjacency to a popular downtown park, and to help blur the line between indoor and outdoor space as users move vertically through the pavilion. Lastly, sustainable measures were integrated within both the interior and exterior portions of the structure to try and move towards a net-zero energy building.

Ultimately, the pavilion is an homage to the creative and resourceful architecture and development that has been helping to improve the City’s built environment and quality of life for its residents in hopes of inspiring even greater innovation and advancement for years to come.



# 2022 IES Rochester Excellence in Illumination Awards Indoor Category Winner



## Gates Chili Performing Arts Center Gates, NY

<b>Owner</b> Gates Chili Central School District	<b>Date of Completion</b> May 2022
<b>Architect</b> SEI Design Group	<b>Photography</b> Greg Huette
<b>MEP Engineer</b> IBC Engineering	

### Project Description

Upon entering the lobby, visitors are welcomed with decorative linear and starburst shaped pendants with a warmer CCT to compliment the wood slat ceiling and accent walls. Perimeter accent downlights illuminate the casual seating area and leads guests over to the concessions stand.

Lighting at the concession stand consists of a combination of recessed downlights and cove lighting. The cooler CCT cove lighting adds a generous amount of light to the space. The design intent was to create the illusion of natural light being extended into the space and avoid to the cavernous feel of a typical corridor.

Auditorium and Control Booth:

- House lighting – Adjustable, high-performance downlights with remote drivers helps make maintenance easier, especially in the 40-ft ceiling areas.
- Aisle lighting – Custom aisle handrail assembly – LED tape installed inside a steel “box” with decorative Gates Chili logo cutout and frosted polycarbonate panel.
- Accent lighting – Color changing flexible LED tape attached to the undulating wall panels. This gives the client the opportunity to add a colored accent to show off school spirit or highlight a special event.
- Control Booth – Black, pinhole downlights installed in the control booth gives the users directed task lighting without creating a distraction for patrons in the house.

Old Auditorium – The original auditorium was completely gutted and converted in large instructional space for the district’s music program.

- Instrumental Music Room – Custom colored, direct/indirect pendants that share a single reference point at the instructor’s/conductor’s podium and splay out towards the perimeter of the room to form a wedge. The arrangement of luminaires gives the space a distinctive look and directs the occupant’s attention to the intended focal point at the podium. This unique solution was achieved using a much more cost-effective and energy efficient fixture selection as compared to other decorative pendant options that were explored.
- Choral Music Room – Dome-shaped pendant luminaires and companion acoustical-only units were arranged in a random pattern with varying fixture diameters and suspension lengths.



# 2022 IES Rochester Excellence in Illumination Awards

## Exterior Category Winner



**Warner Castle – Loggia and Courtyard**  
Rochester, NY

<b>Owner</b> Landmark Society of Western New York	<b>Date of Completion</b> December 2021
<b>Design Firm</b> Stantec	<b>Photography</b> Tom Castelein

### Project Description

Warner Castle is an imposing 1850’s stone structure in the midst of Highland Park. Originally constructed as a private residence, this key contributing structure in a National Register Historic District was vacant and in disrepair in 2017 when an agreement was struck to adapt it into the administrative offices of the Landmark Society of Western New York. Executed over several years in a public-private partnership with Monroe County, modern office space was created while retaining and restoring historic features. The Landmark Society’s recently completed renovation of the Loggia is the project’s most transformative, and publicly visible intervention.

Originally open to the rear Courtyard, the Loggia had been previously enclosed sometime in the 1950’s. The Loggia was substantially reconstructed by this project to correct structural deterioration, improve energy efficiency, and incorporate a wheelchair lift to provide accessibility to the main floor of the Castle for the first time.

The design philosophy guiding Landmark and Stantec throughout the project was to restore and celebrate the old, while letting new elements embrace current technology and respectfully but clearly state they belong to modern times. The design of the exterior lighting at the Loggia and Courtyard exemplifies this approach.

Three understated and discrete LED light fixtures (25w, 4000K) are mounted at mid-wall height, one in the center of each bay of the Loggia. Only 8” x 8” square and 2” deep, these fixtures cast light up and down from an Iron Gray, textured metal housing that coordinates in color and feel with the rustic stone of the surrounding Castle walls. The initial goal for the lighting design was to provide accent lighting on the new wood-clad wall of the Loggia while providing illumination at the entry/exit door. Further study of this fixture revealed the extent of forward throw which carried the promise of providing overall lighting for the Courtyard.

Now executed, that design promise has been realized – and much more. The Courtyard glows with an overall ambient light. The uplight catches and highlights the stepping, top-of-wall detailing directly above and the deep, overhanging, exposed roof framing at the sides. The ground plane is illuminated for the full depth of the courtyard, as are the side walls with their trellis-supported vegetation (currently being restored along with the Courtyard Garden). The sense of light in the courtyard is augmented by the dimmable, signature, pendant LED fixtures on the upper level of the Loggia – also centered in each bay and which were selected with the increased transparency of the new loggia enclosing wall in mind.

In our opinion, the overall effect is a bit of magic in the Park.



# People’s Choice Contest



## The Little Theatre Bero Architecture

**Owner**  
The Little Theatre Film Society

**Photography**  
Lindsay Yoder

The 2022 Winner of the People’s Choice Contest is The Little Theatre.

The third annual People’s Choice Contest was an effort to raise public awareness about our local architectural talent via a philanthropic endeavor. AIA Rochester profiled each of our 28 eligible projects by local architects on social media and then asked the public to weigh in on their favorite contending project by voting online. Each vote cost \$5 and all proceeds this year benefited the Urban League of Rochester. The contest raised \$400 for the Urban League, with The Little Theatre bringing in over \$100 on its own.

# Scholarship Winners



**Maeve St. John**  
Kent State University  
**Quote:** This scholarship has awarded me the opportunity to be able to pursue my dream career.

Myron Starks Scholarship \$2,000  
AIA Rochester Scholarship \$500  
AIA Scholarship \$500  
TOTAL \$3,000



**Martha Casey**  
Syracuse University  
**Quote:** This scholarship is very special to me because it has reaffirmed that Architecture is the right path for me. Deciding I wanted to go into a 5 year program was very intimidating, so knowing there are people in this field that saw potential in my abilities is reassuring. I’m very excited to continue my education at Syracuse this year!

AIA Rochester Scholarship \$3,000



**Quille Hughes**  
Rochester Institute of Technology  
**Quote:** This scholarship provides monetary support but also drives me to keep growing and learning to the best of my ability. One of the best things our generation of emerging architects can learn is that our individual passions are supported and our continuous growth, both as architects and as people, is possible. Thank you!

WiA Scholarship \$2,000  
AIA Rochester Scholarship \$1,000  
TOTAL \$3,000



**Peter Fillion**  
SUNY University at Buffalo  
**Quote:** Thanks to the generosity of AIA Rochester and the The Architectural Foundation of Greater Rochester, I am now able to refocus on multiplying my skills as an architecture student.

AIA Scholarship \$1,000  
AIA Rochester Scholarship \$2,000  
TOTAL: \$3,000



**Danielle Strauf**  
Rensselaer Polytechnic Institute  
**Quote:** I am so honored to receive this scholarship and establish a connection with the profession. I am looking forward to learning more about the different aspects of architecture in the future!

AIA Rochester Scholarship \$3,000



**Vina Nguyen Pharm**  
SUNY Alfred  
AIA Rochester Scholarship \$3,000

AIA Rochester and The Architectural Foundation of Greater Rochester (AFGR) have again partnered to help the next generation of architects pursue their training.

Merit-based scholarships totaling \$18,000 have been awarded to six students heading to school this fall to study architecture courtesy of AIA Rochester and the AFGR, with contributions from AIA National, Women in Architecture, and the Family of Myron Starks. For information on next year’s scholarship program, follow AIA Rochester on social media.

# Awards Jury

Colleagues on the Board of Directors at AIA Pittsburgh comprised the 2022 Design Awards Jury. AIA Rochester is grateful for the great care, effort, and time that they put into our awards selection.



**Jury Chair**  
**Mike Gwin, Principal Director of Design, AIA, LEED AP**

Mike Gwin is a principal with Rothschild Doyno Collaborative. In his role as Director of Design, Mike not only leads projects that deliver innovative design solutions but also fosters a collaborative culture in the design process that encourages the integration of both technical and inspirational goals from initial concept through technical detailing and construction.

In his 20+ years of experience, Mike has consistently received architectural and sustainable design merit for successful project outcomes, including over 40 design awards at the local, state, and national level including an AIA National Honor Award for a net-zero community center and a team member for 2 AIA-COTE National Top Ten Green Design Awards. On numerous accounts, projects have included the adaptive reuse of existing structures into meaningful design solutions that align with clients’ unique visions.

Mike continues to work to advance our professional organization’s mission as the immediate past president of the AIA Pittsburgh Board of Directors. In the community, he has been a leader in the integration of Pittsburgh’s local maker movement into architectural design projects advancing local craft in architecture. He is also a committee member with the Pittsburgh Materials Hub of the International Living Futures Institute advocating for and advancing healthy materials in our built environment. He has been an adjunct studio instructor and guest reviewer at Carnegie Mellon University’s School of Architecture for a number of years and has participated on many design juries.



**Amanda Markovic, AIA**

Amanda is driven by design’s power to transform experience and empower communities in urban centers, the workplace, and academia. Her passion for libraries has led to award-winning renovations for the Carnegie Library of Pittsburgh, Knoxville and a reimagining of the Cincinnati Public Library, Deer Park Next Generation Library. Her passion for equitable development has guided her community-centered approach to 5th & Dinwiddie, a mixed-use, Passive House project in Pittsburgh’s Uptown neighborhood. A great communicator who facilitates productive discussions among multiple project stakeholders, Amanda’s desire to connect everyone to good design has led her to become a leader in the American Institute of Architects Blueprint for Better Communities (B4B) initiative.



**Jeffery Murray, FAIA**

Jeff has been providing client facing experiential and technical design leadership for complex projects supporting research and other knowledge work throughout his 4-decade career. He is a member of the College of Fellows of the American Institute of Architects (FAIA), recognized for his leadership and innovation in the design of research facilities for a wide spectrum of scientific disciplines with a focus on how design impacts human performance and collaboration. He has pioneered iterative and collaborative design processes that engage stakeholders as active participants in the design process. His work with corporate, government, and higher education clients includes the design of research, learning and administrative facilities, high performance building envelopes, renovations and additions, and smart buildings which integrate technology, sustainability, and resilience to improve occupant experience. He has presented at many national and international conferences on the human and technical aspects of architectural design.



**Katie LaForest, AIA**

Katie LaForest is an Associate Principal at mossArchitects, an award-winning boutique architecture firm in the City of Pittsburgh. She is also an Adjunct Instructor with the Carnegie Mellon University School of Architecture, a licensed architect in the state of Pennsylvania, and a LEED Accredited Professional.

She holds a Bachelor of Architecture degree from Virginia Tech and started her professional career with FortyEighty Architecture working on several innovative and sustainable projects.

Her work over the past 11 years at mossArchitects has spanned from single-family residences to mixed-use developments and from commercial interiors to urban planning. She is particularly drawn to adaptive reuse projects that capture the rich history and context of a place, while allowing for modern design. As part of the leadership team within the collaborative design studio, she spearheads their equitable practice efforts and community engagement.

Katie’s fundamental interests lie in exploring ways in which the various scales of architecture – site, building, occupancy, and materiality – can be empowered to create a sense of place and belonging.



**Drew Balzer, AIA**

Drew strives to implement a design process that explores the unique opportunities of each project site and responds to the specific needs of the individual client. The developed solutions are unique and maintain a thoughtful sensitivity to the larger environment. Since joining Bohlin Cywinski Jackson in 2008 after graduating from the University of Tennessee, he continues to refine this design rigor through diverse project experience including corporate headquarters, university buildings, civic facilities, and private residences. These projects are all realized with an inclusive design process that integrates people, ideas, and the built environment.

As an Associate with the firm, he has most recently completed a 64,000 GSF interior renovation for a global technology company and the 90,000 GSF TCS Hall at Carnegie Mellon University.

## Director of Practice + Design



**Christina Fluman, Associated AIA**

Christina is currently an Associate Architect at Edge Architecture and has been a team member there since 2018. She is currently an Associate AIA member and has been serving on the Design Awards Committee since 2020, helping the team to prepare and deliver the recognition for those who continue to advance and push the boundaries of practice and design within the Greater Rochester community. She is currently working towards her licensure and aspires to continue the efforts of the committee in recognizing the extraordinary work that has been put forth by those active within the architectural, building/construction, and other industries who continue to improve not only our built environments, but also the quality of life for those who reside within them.

Thanks to the leadership of Christina, we were able to have the 2022 Design Awards Celebration as in person event. The chapter acknowledges the work of the entire Design Awards Committee: Danielle Rupert, AIA, Michelle Murnane, AIA, Michael Trapanovski, AIA, Jennifer Takatch AIA, Alessia Randazzo, Lisa Fingar, and Executive Director Linda B. Hewitt, Hon. AIANY.

AIA Rochester recognizes and thanks Julie Elwood, who designed the graphics package for the 2022 Design Awards. Julie interned with AIA Rochester this spring and is a 2022 graduate of Alfred State with a major in Digital Media.

# 2022 Design Awards Sponsors

## Instamatic Sponsor



*Bergmann has joined Colliers Engineering & Design*

## Disc Sponsor

# SWBR

## Brownie Sponsors



**CAS**  
Cannan Alexander & Scott



**Bar Sponsor**



**Dessert Sponsor**



**Hors D'oeuvres Sponsor**



**Napkin Sponsor**



**LaBella**  
Powered by partnership.

## Cocktail Slide Sponsors



## Signature Drink Sponsors



**ROZZI**  
ARCHITECTS



## In-Kind Photography Sponsor

Erin Fingar

Instagram: @fingarprints



## 2022 People's Choice Contest

The 2022 People's Choice Award raised \$400 for The Urban League of Rochester Thank you so much for your generosity!

AIA Rochester especially thanks our sponsors for their enthusiastic participation in our Design Awards. Without their ongoing commitment, this event would not have been possible.

Visit [www.aiaroc.org/2022-design-awards](http://www.aiaroc.org/2022-design-awards) to see additional information about our award winning projects.