

## **Project Description/Narrative**

The Living Hope Treatment Center at the Villa of Hope is an 8600 sq ft facility providing urgently needed medically supervised withdrawal services for adolescents and young adults suffering from addiction in Monroe County. For a period of up to two weeks, clients may stay at the Center on an in-patient basis, receiving both medical supervision and counseling at this critical stage at the beginning of their recovery journey. The facility is the first of its kind in this part of the state in providing this type of recovery care to this age range. The design strives to facilitate the delivery of professional clinical services in a comforting, nurturing setting.

The program has a capacity of 18 clients, primarily served by private rooms. A range of gathering spaces including a Dining Room, Group Counseling Room, and small informal lounges provide a nurturing setting for participant communication and social support. Defined, secured exterior south-facing exterior greenspaces provide client access to the healing power of nature. The building's heating and cooling is provided by a variable refrigerant flow (VRF) system, designed with for energy efficiency, and minimizing reliance on fossil fuels.

The Villa of Hope's social services campus is a bucolic setting in the midst of a densely developed Town, originally adapted in the 1940's from a working farm. The Living Hope Treatment Center is the first new building constructed on the campus since the development of the adjacent Education Complex in the late 1980's.

The exterior design's form seeks to bridge the design typologies of the traditional brick buildings on the Villa of Hope's campus and the adjacent mid-century residential development, while respectfully addressing the surrounding context of the Dewey Avenue corridor in the Town of Greece. Administrative and Clinical programming functions each have their own massing expression, linked literally and symbolically by the welcoming entrance and counseling volume.

## **AIA's Framework for Design Excellence**

### ***Design for Wellness: How does the design promote the health of the occupants?***

The design provides a comforting, healing setting for critically needed addiction treatment services. All spaces have generous access to light and exterior views, and secured exterior spaces are provided for client use. Communal gathering spaces promote supportive socialization. All regulated programmatic features and services required for NYS Office of Addiction Services and Support (OASAS) operational licensure have been provided in what OASAS has described as a state-of-the-art facility. Soothing color tones have been combined with rich wood grain finishes to add warmth to the interiors.

### ***Design for Energy: Is the project energy-efficient and sustainable while improving building performance, function, comfort, and enjoyment?***

The heating and cooling system for the building is an advanced Variable Refrigerant Flow system. The heart of this environmental conditioning plant are highly efficient air to air heat pumps. The building is therefore not bound to the combustion of fossil fuels for environmental comfort and this electrically powered equipment facilitates the use of renewable energy sources.

The walls of the building envelope utilize composite construction material that incorporates structural sheathing, continuous rigid insulation and an air and weather barrier in one component. Dense, thermally efficient, environmentally friendly mineral wool batts have been installed in framing cavities.

### ***Design for Equitable Communities: How does this project contribute to creating a walkable, human-scaled community inside and outside the property lines?***

The project has been designed with pedestrian connectivity both within the Villa campus and out to the public right-of way. Extraordinary care has been taken to ensure this building responds to and sensitively fits within its surrounding context in its scale, massing, use of materials and color selection and overall design.

In a larger programmatic sense, the project promotes Equitable Communities by providing critically needed addiction recovery services to a previously unserved segment of the population – adolescents and young adults.

## **AIA Rochester Community Impact Award**

While great care was taken in the design of this project for it to respond sensitively and respectfully to its surrounding design environment, the truly important, fundamental Community Impact here is programmatic. It is that this facility now exists to provide desperately critical, life altering –indeed, life saving – care

In 2017, 32% percent (*1,700 people*) of county residents seeking services had to travel outside of Monroe County due to a lack of bed availability. None of the existing treatment facilities had a focus on youth population The Living Hope Treatment Center will serve patients in Monroe County who are struggling with addiction and who have previously had to seek treatment outside of the county.

Operated by the Villa of Hope in partnership with NYS OASAS and Monroe County, the project provides state-of-the art care in a nurturing environment to a previously underserved segment of the population. Funded by a capital grant from New York State the development of the project was a cost-effective use of public funds, designed and constructed during the COVID 19 pandemic.

“Individuals and families seeking help should not have to travel outside of Monroe County to find it. We need to eliminate barriers and stigma to get people the help they need – when and where they need it. Harmful drug use and contaminated drug supply are killing our friends, neighbors, and young people – they are killing our communities. We all need to step up and take on this challenge.”

Christina Gullo, President/CEO of Villa of Hope

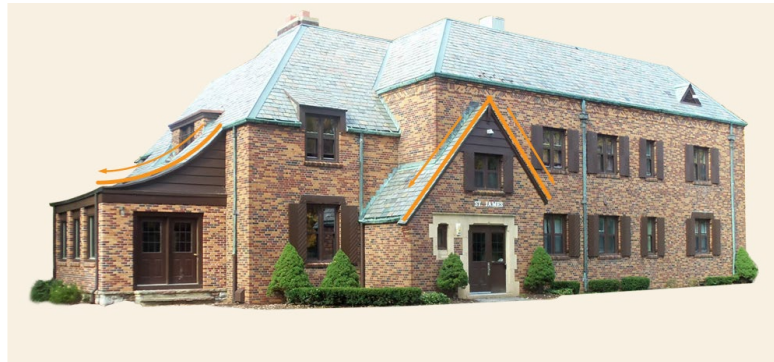
“Helping people stabilize and manage their withdrawal from substance use disorders is an important part of the continuum of addiction care. It is often the first step for many people in their journey to becoming healthier. The opening of this new program continues our efforts to meet the needs of people across New York State and provide them the help and resources they need to live healthier lives.”

OASAS Commissioner Chinazo Cunningham

“Addiction is a disease -- a medical illness -- and we should treat it with the same care and compassion. This is especially important for young adults, because treatment can potentially prevent a lifetime of addiction and the unintended consequences addiction inflicts on loved ones, families, workplaces and communities. This new facility helps fill a void in our region and gives those who are suffering a chance to thrive.”

Dr. Michael Mendoza, Monroe County Commissioner of Public Health





Site Context





Exterior Photo: Overall Site Aerial View

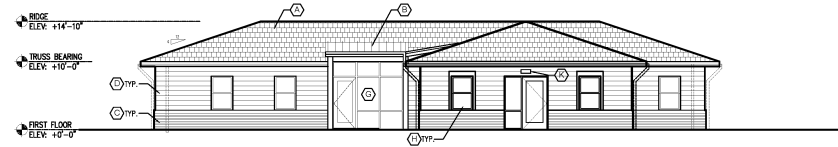
Credit: Tim Wilkes Photography



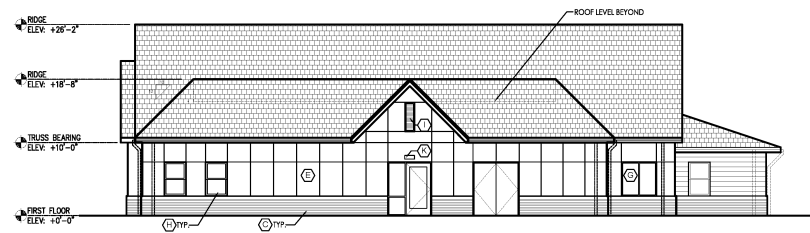
**EXTERIOR MATERIAL KEY NOTES:**

**EXTERIOR MATERIAL KEY NOTES:**

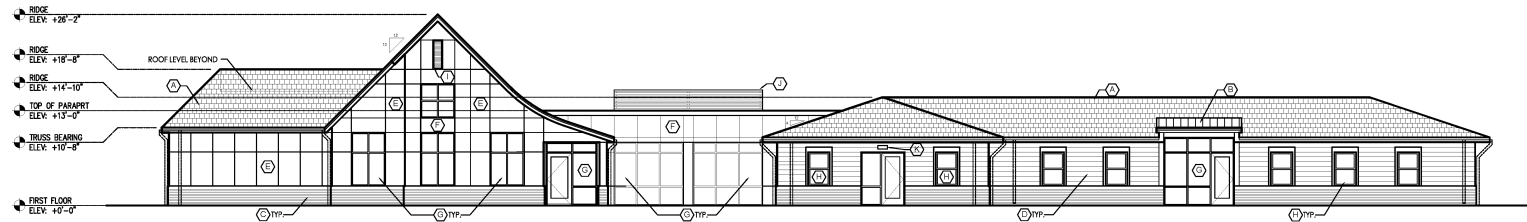
- Ⓐ ASPHALT SHINGLES - GREY
- Ⓑ STANDING SEAM METAL ROOF - GREY
- Ⓒ BRICK - BROWNDEEP RED BLEND
- Ⓓ FIBER CEMENT CLAPBOARD SIDING PAINTED - TAN
- Ⓔ FIBER CEMENT PANELS PAINTED - TAN
- Ⓕ FIBER CEMENT PANELS PAINTED - DARK GREY
- Ⓖ ALUMINUM STOREFRONT WINDOW FRAMING BLACK
- Ⓗ ALUMINUM CLAD WOOD WINDOWS - BLACK
- Ⓘ ALUMINUM LOUVERS - BLACK
- Ⓚ ALUMINUM MECHANICAL EQUIPMENT SCREEN - GREY
- Ⓛ LIGHT FIXTURE



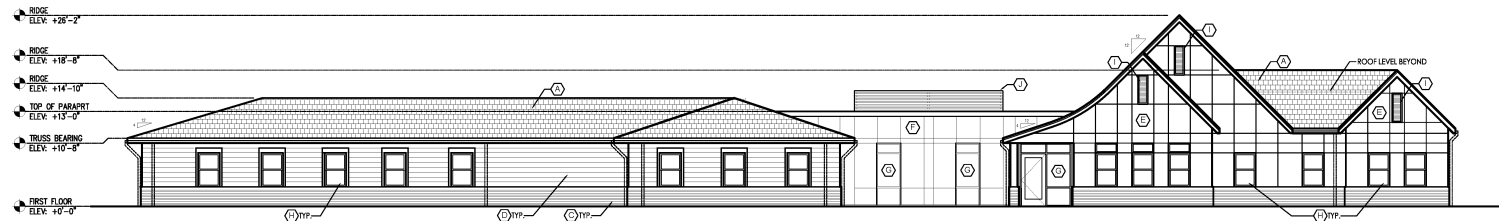
**4 EAST ELEVATION**  
1/8" = 1' - 0"



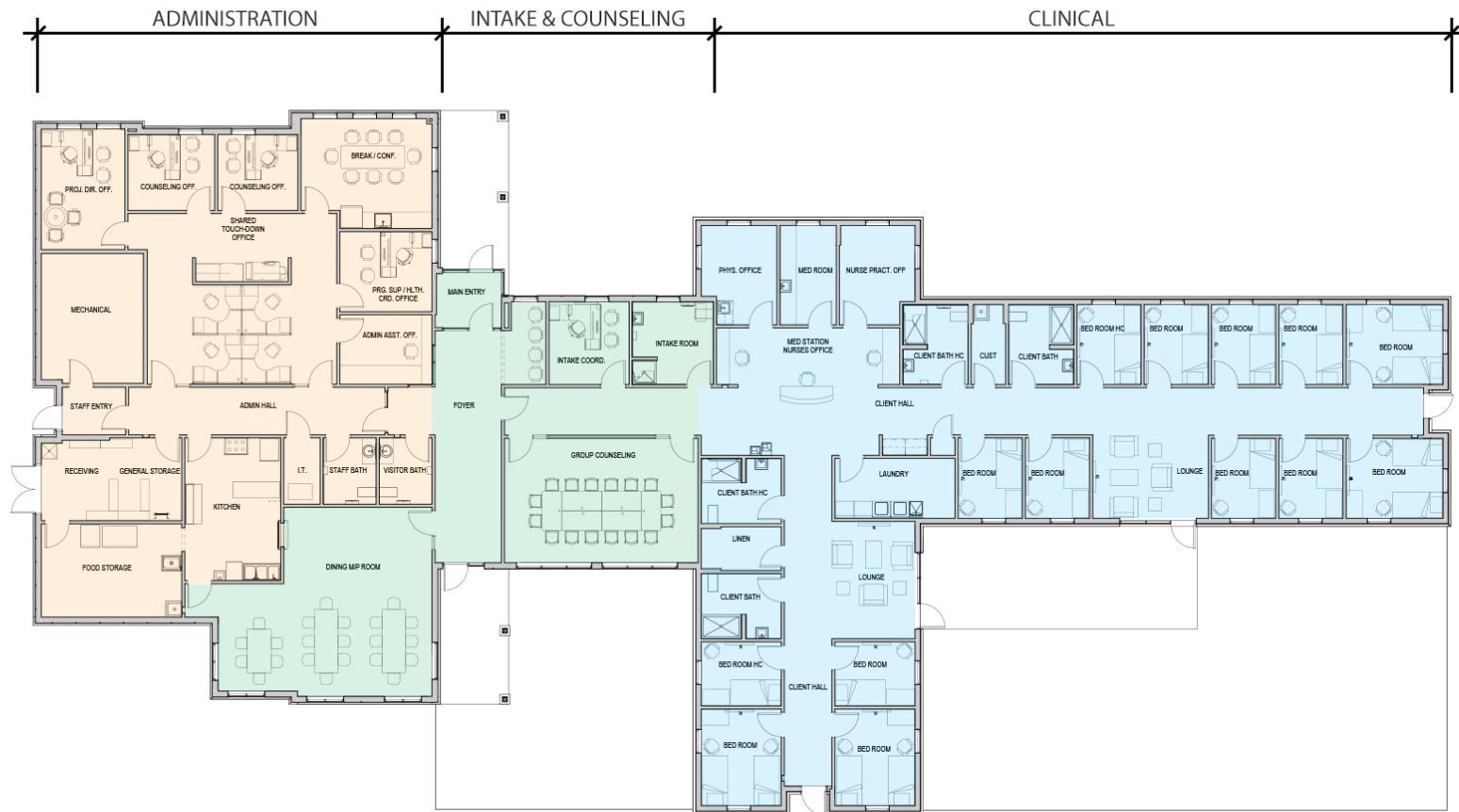
**3 WEST ELEVATION**  
1/8" = 1' - 0"



**2 SOUTH ELEVATION**  
1/8" = 1' - 0"



**1 NORTH ELEVATION**  
1/8" = 1' - 0"







Exterior Photo: Massing

Credit: Tim Wilkes Photography





Exterior Photo: Entry Elevation, Facing Villa Campus

Credit: Tim Wilkes Photography





Exterior Photo: Front/Public Elevation

Credit: Tim Wilkes Photography





Interior Photo: Med Station Nurses Area

Credit: Tim Wilkes Photography



Interior Photo: Lounge

Credit: Tim Wilkes Photography





Exterior Photo: Front Elevation Nighttime



Credit: Tim Wilkes Photography





Interior Photo: Dining/ Multipurpose Room

Credit: Tim Wilkes Photography





Exterior Photo: Front/Public Elevation Nighttime

Credit: Tim Wilkes Photography